

Software for creating protocols is pre-installed

Compact size Dispensing workstation for 96 / 384 wells

NEW

NichiMart **CUBE**

Compact size, ideal for automation of small applications.
Integrated options and intuitive software.

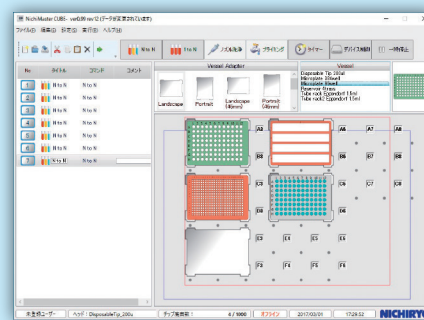


■ Protocols can be fully created and modified without restriction

The Nichimart CUBE with software for creating protocols. Protocols can be easily created and modified by combining vessel adaptors with multiple positions in the work deck. When the container is placed at the specified position on the work deck, it instantly determined the coordinates.

In addition to various microplates, non-standard containers can be additionally registered.

*Needs to be connected with PC. No memory functions incorporated on the main body.

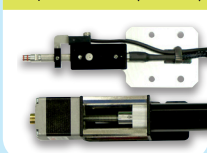


software for creating protocols **NichiMaster CUBE**

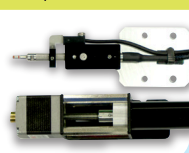
■ Replaceable nozzle sets

The Nichimart CUBE comes with a standard 200μL nozzle. It can be replaced by either 30μL, 1000μL or 1200μL nozzle unit. 8 channel nozzle unit and Cleaning nozzle unit are also available as an option.

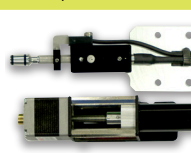
200μL nozzle unit (standard)



30μL nozzle unit



1000μL nozzle unit



1200μL nozzle unit



option

• 8channel nozzle unit (220μL)

• Cleaning nozzle unit
1) Syringe type pump unit
2) Single cleaning probe
3) Wash ball

*3 Necessary items as a set available for using cleaning nozzle.

■ Detection of liquid level and liquid clogging

Liquid level and clogging can be detected by real time communication control with an error message.



■ Equipped with I/O port for external device connection

Standard built-in I/O port, on/off of external devices such as plate shaker, plate heater and vacuum pump, etc. can be controlled. By this feature, various applications can be automated. It also supports serial communication control RS-232C as an option.

Product name

NichiMartCUBE system
Standard accessories . . . Dispensing head: 200μL nozzle unit, Vessel adapter(6 pcs), NichiMart CUBE(control software)
Eigenvalue data, Power cable, User's manual

Optional nozzle unit	Remarks	Optional nozzle unit	Remarks
30μL nozzle Unit	range of accuracy guarantee : min.vol. 3~30μL	1200μL nozzle Unit	range of accuracy guarantee : min.vol. 100~1200μL
200μL nozzle Unit	range of accuracy guarantee : min.vol. 10~220μL	8channel nozzle Unit	range of accuracy guarantee : min.vol. 20~220μL
1000μL nozzle Unit	range of accuracy guarantee : min.vol. 100~1000μL	Cleaning nozzle Unit	range of accuracy guarantee: 10%stroke

Dimension	Dimension to Install				600mm(W) x 590mm(D) x 575mm(H) (without PC)			
Work deck dimension		350mm(W) x 300mm(Y) x 140mm(Z)						
Capacity		Max. 7 pcs (microplate) (depend on a dispense head)						
Nozzle Unit		Standard: 200μL / Option: 30μL、1000μL、1200μL、8channel、Cleaning nozzle						
Nozzle Unit Volume range	30μL	3~30μL		1200μL		100~1200μL		
	200μL	10~220μL		8channel		20~220μL		
	1000μL	100~1000μL		Cleaning nozzle		100μL~10mL		
Weight		Approx. 45kg (without PC)						
Power source		AC100~240V 50/60Hz 100VA (Power consumption varies by system configurations.)						
PC spec		Windows * 7/8/8.1 (32/64bit)/10(64bit) RS232C serial port CD-ROM						

* PC with above specification required to create protocol and adjust system.

	Nozzle Unit	Volume (μL)	AC (%)	CV (%)	Nozzle Unit	Volume (μL)	AC (%)	CV (%)
Accuracy · Precision	30μL	3	± 5.0	≤ 5.0	1200μL	120	± 3.0	≤ 1.0
		30	± 1.0	≤ 1.0		1200	± 0.8	≤ 0.5
	200μL	20	± 3.0	≤ 1.0	8channel (200μL)	20	± 3.0	≤ 1.0
		200	± 0.8	≤ 0.5		200	± 0.8	≤ 0.5
	1000μL	100	± 3.0	≤ 1.0	Cleaning nozzle Unit	Full stroke	± 1.0	≤ 0.2
		1000	± 0.8	≤ 0.5				